

OMRON






PREMIUM

Automatic Wrist Blood Pressure Monitor

MODEL HEM-6052

Advance Position Sensor For More Accurate Measurement



- ❖ Clinically Proven Accuracy
- ❖ Advanced Position Sensor (with flash and buzzer) for more accurate measurement
-  Blood Pressure Level Indicator
-  Detects Irregular Heartbeat
-  Detects Body Movement
-  100 Sets readings/user with Date and Time
-  Displays average of last three readings taken within last 10 minutes



A Good Sense of Health



Intellisense Technology

Automatically applies the right amount of pressure for fast, accurate and more comfortable measurements

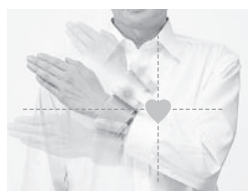


HEM-6052 Wrist Blood Pressure Monitor provides accurate and comfortable wrist blood pressure measurement. Equipped with Advanced Position Sensor (APS), it detects the optimal wrist position for more accurate wrist blood pressure measurement.

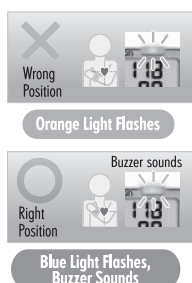
❖ **Advanced Position Sensor**

When using wrist blood pressure monitor, measuring at heart level is important to achieve accurate blood pressure measurements.

The **Advanced Position Sensor** in HEM-6052 ensures measurement begins only when the wrist is at the correct position.



Light and Sound Indication for Correct Measuring Position



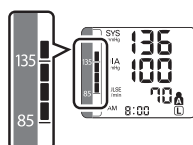
While the position is incorrect, the Positioning indicator lights in orange. The buzzer beeps when the wrist is in proper position, and the Positioning indicator turns to blue. The wrist cuff automatically starts to inflate and measurement starts.

❖ **Blood Pressure Level Indicator**

Recent research suggests that the following values can be used as a guide to high blood pressure for measurements taken at home.

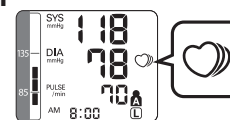
Systolic Blood Pressure	>135mmHg
Diastolic Blood Pressure	> 85mmHg

This criteria is for home blood pressure measurement.



❖ **Irregular Heartbeat Indicator**

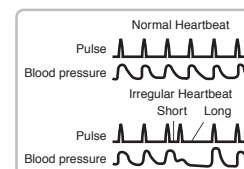
Irregular heartbeat can influence the results of the measurement. The irregular heartbeat algorithm automatically determines if the measurement is usable or needs to be repeated.



If the irregular heartbeat symbol is shown frequently, please make your doctor be aware of it.

What is Irregular Heartbeat?

An irregular heartbeat is a heartbeat rhythm that varies by more than 25% from the average heartbeat rhythm detected while the unit is measuring the systolic and diastolic BP.



If such an irregular rhythm is detected more than twice during measurement, the irregular heartbeat symbol is shown.

❖ **Guide for proper measurement posture**

Keep the position of the heart mark on the wrist cuff at the center of the chest.



Specifications:

Model	HEM-6052
Display	Digital display
Measurement	Oscillometric method
Measurement range	Pressure: 0 - 299 mmHg Pulse: 40 - 180 beats/min
Memory	100 measurements with date & time for each user (A& B)
Accuracy	Pressure: ± 3 mmHg Pulse : $\pm 5\%$ of reading
Inflation	Automatic inflation by pump
Deflation	Automatic rapid deflation
Pressure Detection	Electrostatic capacity semiconductor pressure sensor
Power Supply	Two 1.5V "AAA" alkaline (LR03) batteries
Battery Life	Approx. 300 measurements, with new alkaline batteries
Operating Temperature / Humidity	+10°C to +40°C, 30% to 85% RH
Storage Temperature / Humidity	-20°C to +60°C, 10% to 95% RH
Weight of main unit	Approx. 114g without batteries
Main unit Dimensions	70 (w) x 70 (h) x 21 (d) mm
Measurable wrist circumference	13.5 - 21.5 cm
Contents	Main unit, Storage case, Instruction Manual, 2 AAA batteries, Quick Guide

OMRON HEALTHCARE Co.,Ltd
24 Yamanouchi Yamanoshita-cho.
Ukyo-ku, Kyoto 615-0084 Japan

Asia Pacific HQ

OMRON HEALTHCARE SINGAPORE PTE LTD.
83 Clemenceau Avenue #15-05
UE Square Singapore 239920

www.omron-healthcare.com.sg

Distributed by:



OMRON HEALTHCARE EUROPE B.V.
Kruisweg 577, 2132 NA Hoofddorp
The Netherlands / Les Pays-Bas

CE 0197